



Office of General Services

DESIGN & CONSTRUCTION GROUP
THE GOVERNOR NELSON A. ROCKEFELLER
EMPIRE STATE PLAZA
ALBANY, NY 12242

ADDENDUM NO. 1 TO PROJECT NO. 47634

CONSTRUCTION, HVAC, ELECTRICAL AND PLUMBING WORK
PROVIDE FFA BUILDING
NEW YORK STATE FAIRGROUNDS
581 STATE FAIR BOULEVARD
SYRACUSE, N.Y.

August 27, 2025

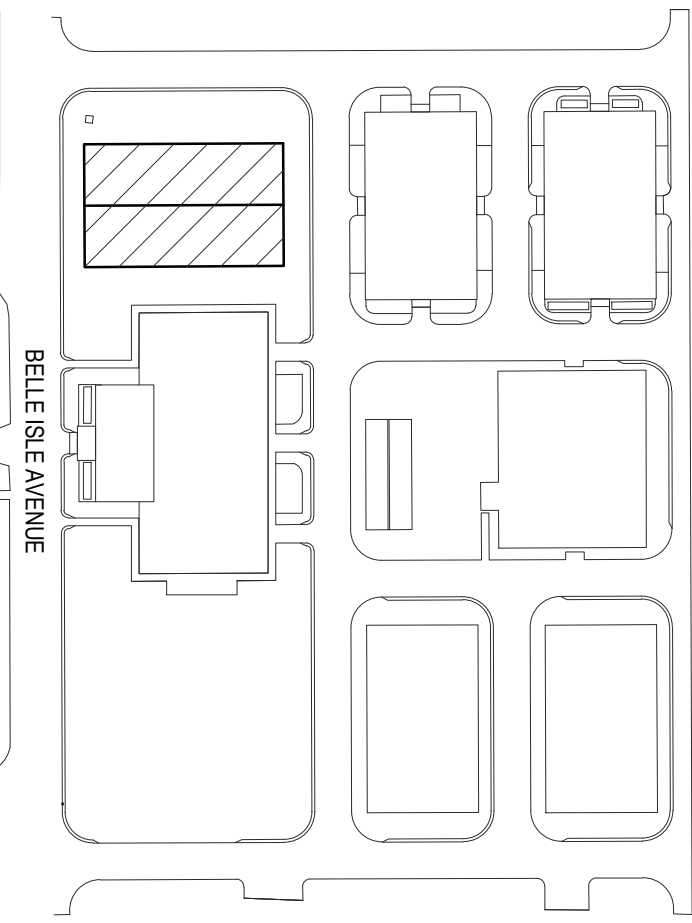
<p>NOTE: This Addendum forms a part of the Contract Documents. Insert it in the Project Manual. Acknowledge receipt of this Addendum in the space provided on the Bid Form.</p>
--

CONSTRUCTION WORK DRAWINGS

1. Revised Drawings:
 - a. Drawing Nos. C-101, C-102, and C-141 noted "REVISED DRAWING 8/15/2025" accompany this Addendum and supersede the same numbered originally issued drawings.

END OF ADDENDUM

Brady M. Sherlock, P.E.
Director, Division of Design
Design & Construction

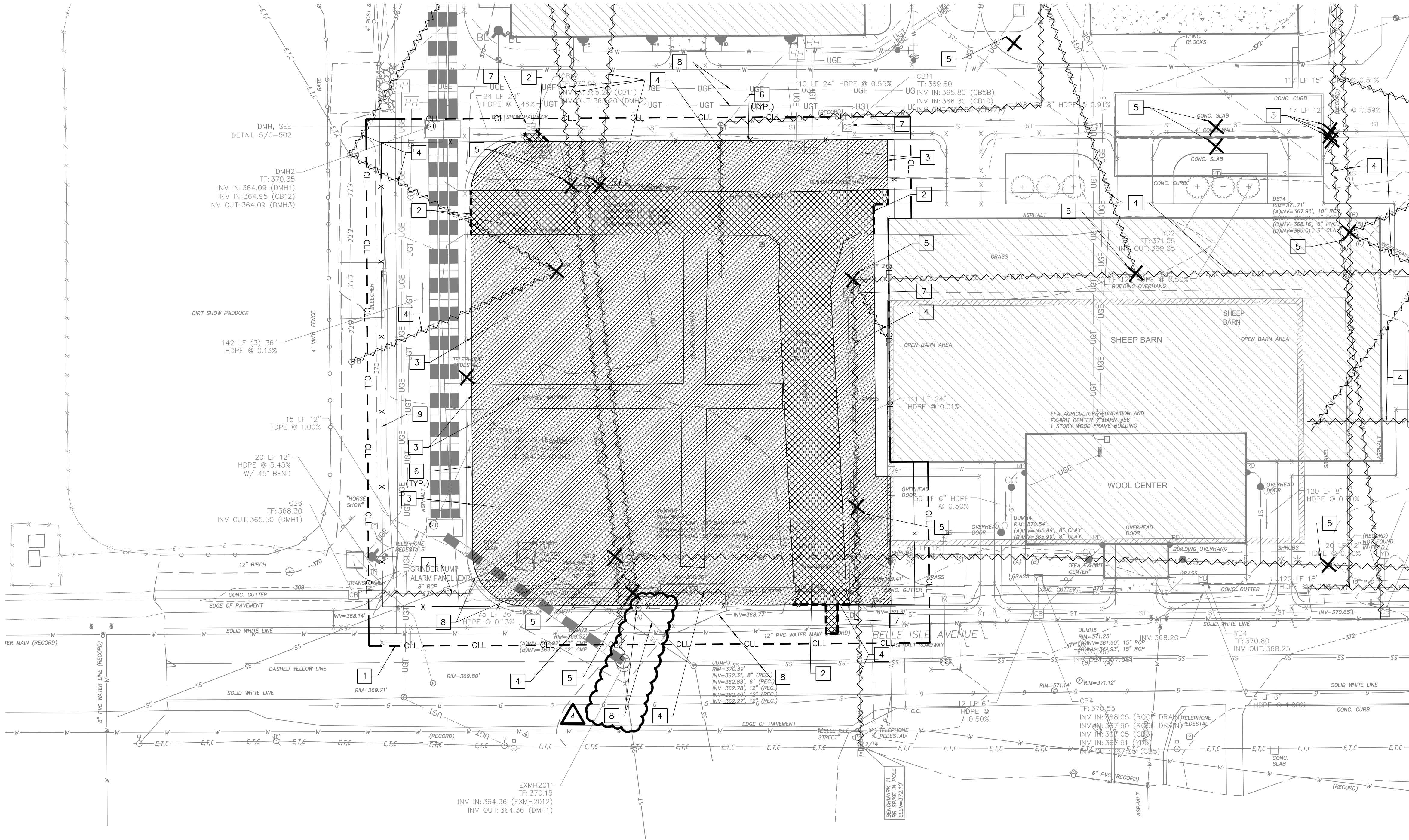


6. UNDERGROUND UTILITIES SHOWN HEREON ARE BASED ON SURFACE EVIDENCE AND INFORMATION RECORDED DURING CONVENTIONAL SURVEY METHODS. THIS MAPPING DOES NOT PURPORT TO SHOW ALL UNDERGROUND UTILITIES ON SITE AND IS SUBJECT TO FIELD VERIFICATION.


$$1'' = 20'$$

CLIENT: NEW YORK STATE DEPT.
OF AGRICULTURE & MARKETS

SHEET 08 OF 56



DRAWING NOTES

- LIMITS OF CONSTRUCTION. CONTINUOUSLY MAINTAIN THE WORK AREA IN A CLEAN AND SAFE CONDITION. TAKE ALL NECESSARY PRECAUTIONS TO MAINTAIN PROTECTED ACCESS FOR FACILITY EMPLOYEES AND PUBLIC USING FACILITIES AS WORK PROCEEDS. PROVIDE AND MAINTAIN TEMPORARY BARRICADES, WARNING SIGNS, AND OTHER TEMPORARY PROTECTIVE MEASURES THROUGHOUT THE WORK.
- NEATLY SAW-CUT AND REMOVE EXISTING ASPHALT PAVEMENT SECTIONS AND SUBBASE. EXCAVATE TO REQUIRED SUBGRADE ELEVATION. FOR BUDDING, ASSUME 17" OF SECTIONAL REMOVAL INCLUDING SURFACE MATERIAL.
- REMOVE AND SALVAGE EXISTING 4" OF STONE DUST. EXCAVATE TO REQUIRED SUBGRADE ELEVATION. COORDINATE STOCKPILE AND TURNOVER WITH DIRECTOR'S REPRESENTATIVE.
- UNDERGROUND UTILITY REMOVED UNDER OGS PROJECT NO. 47304.
- UTILITY STRUCTURE REMOVED UNDER OGS PROJECT NO. 47304.
- PROTECT EXISTING CURB TO REMAIN.
- PROTECT EXISTING CATCH BASIN TO REMAIN.
- PROTECT EXISTING UTILITY TO REMAIN.
- TEMPORARY CONSTRUCTION FENCE PER DETAIL 9/C-502.

SEE DRAWING C-001 FOR GENERAL NOTES, SYMBOL KEY AND EROSION & SEDIMENT CONTROL NOTES;
SEE DRAWINGS C-501 TO C-503 FOR TYPICAL DETAILS

REMOVAL PLAN

1" = 20'

GENERAL REMOVAL NOTES:

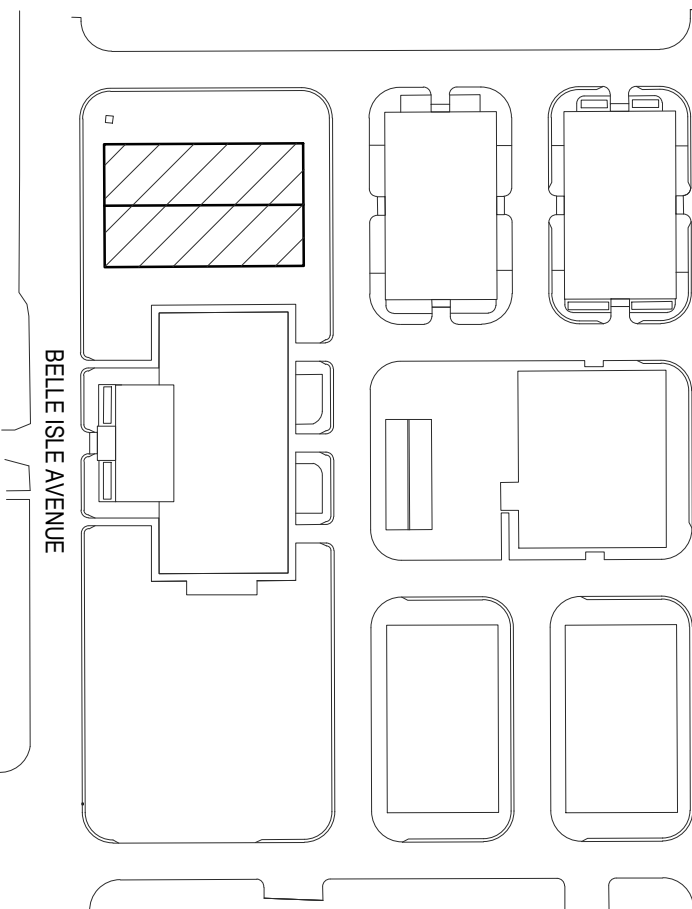
- ANY EXCAVATION SOIL SPOIL MATERIAL SHALL BE PLACED WITHIN THE BLACK LOT DUE TO UNKNOWN SOIL CONTAMINATION. COORDINATE WITH DIRECTOR'S REPRESENTATIVE FOR EXACT PLACEMENT LOCATION WITHIN THE BLACK LOT. SEE C-002 FOR BLACK LOT LOCATION.
- ALL EXCAVATIONS ASSOCIATED WITH UTILITY AND SUBSURFACE STRUCTURE REMOVALS, SHALL BE BACKFILLED WITH SELECT GRANULAR MATERIAL TO FINISHED SUBGRADE ELEVATIONS. COMPACT SELECT GRANULAR MATERIAL IN ACCORDANCE WITH SPECIFICATION SECTION 310000 BASED UPON THE FINISHED SURFACE CONDITIONS.
- FOR AREAS INDICATED AS CONCRETE AND ASPHALT REMOVAL, REMOVE AND DISPOSE LEGALLY OFF-SITE ALL CONCRETE, ASPHALT, AND SUBBASE MATERIALS. BACKFILL WITH SELECT GRANULAR MATERIAL TO FINISHED SUBGRADE ELEVATIONS. COMPACT SELECT GRANULAR FILL MATERIAL IN ACCORDANCE WITH SPECIFICATION SECTION 310000 BASED UPON THE FINISHED SURFACE CONDITIONS.

SURVEY NOTES:

- NORTH IS ORIENTED TO GRID NORTH FROM GPS OBSERVATION.
- THE VERTICAL DATUM IS THE NATIONAL GEODETIC VERTICAL DATUM OF 1929 (NGVD29)
- THE HORIZONTAL DATUM IS ON NORTH AMERICAN DATUM OF 1983 (2011), NEW YORK CENTRAL ZONE.
- CONTOUR INTERVAL = 1 FOOT.
- INFORMATION SHOWN HEREON IS FROM A FIELD SURVEY COMPLETED BY M.J. ENGINEERING AND LAND SURVEYING, P.C. APRIL 9, 2020.
- UNDERGROUND UTILITIES SHOWN HEREON ARE BASED ON SURFACE EVIDENCE AND INFORMATION RECORDED DURING CONVENTIONAL SURVEY METHODS. THIS MAPPING DOES NOT PURPORT TO SHOW ALL UNDERGROUND UTILITIES ON SITE AND IS SUBJECT TO FIELD VERIFICATION.



ALL UNDERGROUND UTILITY LOCATIONS ARE APPROXIMATE.
BEFORE YOU DIG, DRILL, OR BLAST, RETAIN AN INDEPENDENT UTILITY
LOCATOR SERVICE TO FIELD LOCATE AND MARK EXISTING UNDERGROUND UTILITIES.



KEY PLAN

NTS

DESIGN & CONSTRUCTION

CONSULTANT: POPLI DESIGN GROUP

CERTIFICATE OF AUTHORIZATION: # 021331

TRAUTMAN ASSOCIATES
ARCHITECTS / ENGINEERS

PDG
POPLI DESIGN GROUP

UNIFORM CODE COMPLIANCE STATEMENT:

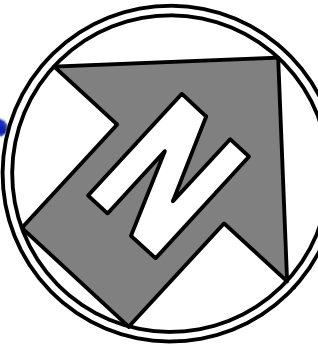
TO THE BEST OF THE REGISTERED DESIGN PROFESSIONAL'S KNOWLEDGE, BELIEF AND PROFESSIONAL JUDGEMENT, THESE PLANS AND/OR SPECIFICATIONS ARE IN COMPLIANCE WITH THE 2020 UNIFORM CODE.

ENERGY CODE COMPLIANCE STATEMENT:

TO THE BEST OF THE REGISTERED DESIGN PROFESSIONAL'S KNOWLEDGE, BELIEF AND PROFESSIONAL JUDGEMENT, THESE PLANS AND/OR SPECIFICATIONS ARE IN COMPLIANCE WITH THE 2020 ENERGY CODE.

WARNING:

THE ALTERATION OF THIS MATERIAL IN ANY WAY, UNLESS DONE UNDER THE DIRECTION OF A COMPARABLE PROFESSIONAL, I.E. ARCHITECT FOR AN ARCHITECT, ENGINEER FOR AN ENGINEER OR LANDSCAPE ARCHITECT FOR A LANDSCAPE ARCHITECT, IS A VIOLATION OF THE NEW YORK STATE EDUCATION LAW AND/OR REGULATIONS AND IS A CLASS 'A' MISDEMEANOR.



CONSTRUCTION

TITLE: PROVIDE
FFA BUILDING

LOCATION: NEW YORK STATE FAIRGROUNDS
581 STATE FAIR BOULEVARD
SYRACUSE, NEW YORK

CLIENT: NEW YORK STATE DEPT.
OF AGRICULTURE & MARKETS

MARK	DATE	DESCRIPTION
4	08/18/2025	REVISED DRAWING
3	03/20/2025	FINAL SUBMISSION
2	11/04/2024	100% SUBMISSION
1	10/09/2024	INTERIM REVIEW

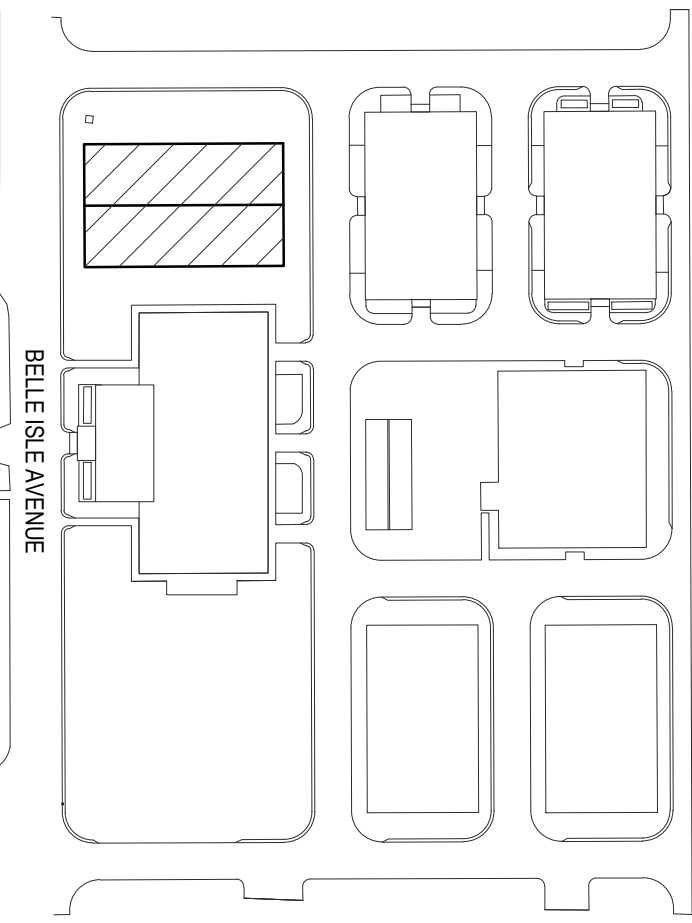
SHEET TITLE:

REMOVAL PLAN

DRAWING NUMBER:

C-102

SHEET 09 OF 56



SEE DRAWING C-001 FOR GENERAL NOTES, SYMBOL KEY AND EROSION & SEDIMENT CONTROL NOTES;
SEE DRAWINGS C-501 TO C-503 FOR TYPICAL DETAILS

SCALE IN FEET

0 20 40

SHEET 13 OF 56